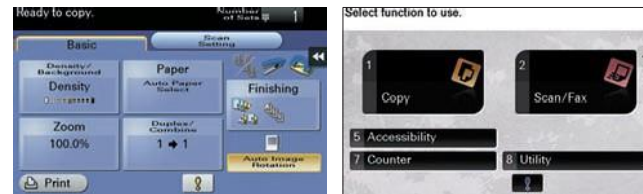


Extra consideration for better operability

Screen display enlarge and colour reversal functions

The screen display enlarge function to enlarge the text on the buttons. The screen display colour reversal function to reverses the display colour while maintaining the same contrast ratio. For better visibility to help elderly users and users with low vision.



Advanced technology that has a minimal impact on the environment

Usage of the recycled materials

Konica Minolta has made further advances on its unique chemical processing technology. It has also increased its use of recycled PC/PET and has raised the PCR ratio*1 to approximately 70%. This recycled material accounts for more than 21% of the weight ratio of the total resin volume in the main unit. The ratio of recycled materials in the surface area of the machine has increased to approximately 74%.

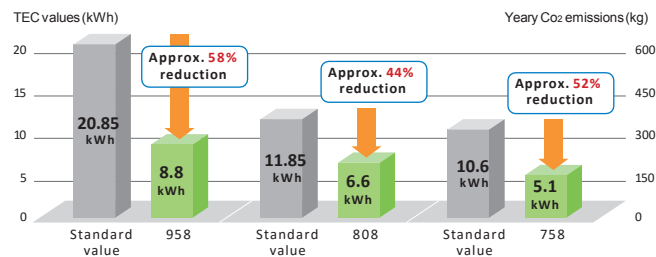
*1 PCR (post-consumer recycling): the ratio of municipally recycled materials used in the recycled materials.



Best-in-class low power consumption design

Environment-friendly technologies are used throughout the systems, and is the best-in-class low power consumption. TEC values of bizhub 958 series have been achieved the standard value of Ver.2.0 ENERGY STAR Program. It also achieved 0.5W of power consumption during sleep mode, that results in major CO2 emission reductions.

Reduction rates against standard values defined in the International Energy Star Program



* Values at 220-230 V
 * TEC values applied to the International ENERGY STAR Program Version 2.0
 Yearly CO2 emissions: TEC value x 52 weeks x emission factor
 (From the November, 2011 press release by Japan's Ministry of the Environment.)



Leverage the power of your bizhub MFP to maximize the document security. Ask for a free security consultation and be surprised at what the Konica Minolta MFP can do.



bizhub 958/758

Model shown is 958 with options.

- 958 B&W 95 ppm
- 758 B&W 75 ppm
- Resolution 1,200 dpi
- SRA3
- Dual Scan ADF 240 opm Duplex
- Dual Scan ADF 120 opm Simplex
- Biometric Authentication
- IC-Card Authentication
- USB Print
- Colour Internet Fax
- Fax
- Mobile Support
- Bioplastic
- Recycled PC/ABS
- Simitri with Biomass

*1 Optional

For more information please visit the bizhub Web site at

www.konicaminolta.com/me

Product appearance, configuration and/or specifications are subject to change without notice. This product is not available for some countries or regions.

KONICA MINOLTA, the KONICA MINOLTA logo, symbol mark, Giving Shape to Ideas, bizhub, INFO-Palette, PageScope, PageScope logo, Simitri, Simitri with Biomass, Emperon, i-Option, Konica Minolta Optimised Print Services and their respective logos are registered trademarks or trademarks of KONICAMINOLTA, INC.
 Google, Android, Google Cloud Print are registered trademarks or trademarks of Google Inc. in the U.S. and other countries.
 MAC OS, AirPrint and AirPrint logo are registered trademarks or trademarks of Apple Inc. in the U.S. and other countries.
 Bluetooth is a registered trademark or trademark of Bluetooth SIG, Inc.
 Microsoft, Windows and Office are registered trademarks or trademarks of Microsoft Corporation in the U.S. and other countries.
 Mopria is a registered trademark or trademark of Mopria Alliance Inc.
 Felica is a registered trademark or trademark of Sony Corporation.
 NFC is a registered trademark or trademark of the NFC Forum.
 MIFARE is a registered trademark or trademark of NXP B.V.
 All other brands and product names are registered trademarks or trademarks of their respective companies or organisations.

Presence in the region

Dubai, Kingdom of Saudi Arabia, Kingdom of Bahrain, Kuwait, Qatar, Sultanate of Oman, Pakistan, Republic of Yemen

Konica Minolta Business Solutions Middle East FZE
 JAFZA Bldg. 22, Jebel Ali Free Zone, Dubai United Arab Emirates
 Telephone No. +971 4 880 8388

Ecology & Environment

KONICA MINOLTA products are designed with the environment in mind.

- Energy Star
- RoHS Compliance
- WEEE Compliance
- Eco-friendly Toners
- Production at ISO Certified Factories



From consulting, system design, to operations, Konica Minolta offers total support to optimise your office output environment.

Requirements for safe use

- Please read and follow the instruction manual to ensure safe operation.
- Only operate using appropriate power supply and voltage.
- Connecting the earth wire to an inappropriate place may cause explosion or electric shock. Please connect accordingly (Taiwan and the Philippines only).



bizhub 958/758

A3



958 BW 95 PPM

758 BW 75 PPM



Giving Shape to Ideas

Further evolution of productivity

MFPs bring in a new era



High productivity that is ideal for CR D s and High- volume Offices

Faster printing speed

This series achieved significantly fast copy/print speed of 95 ppm*1. This answers to CR D s and high- volume offices' requirement of a speedy large- volume output. Shortening output time enables effective use of time and manpower, resulting efficiency and cost reduction.



*Printing speed for 958: 95 sheets, 758: 75 sheets (A4 horizontal)

Simplicity and usability to fit any working environment

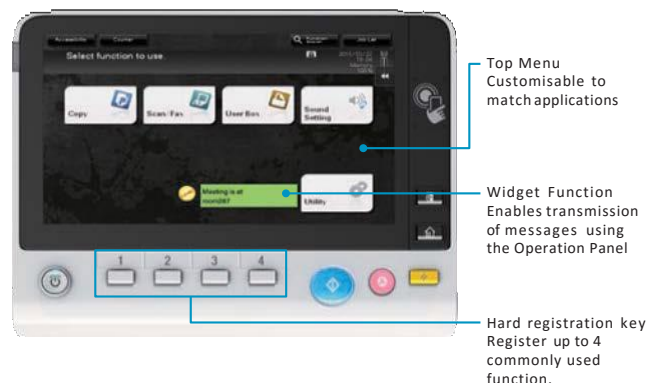
Product design

The bizhub 958 series adopts "INFO-Palette" design that unifies interface design and provide intuitive operation to ensure the same user experience from no matter what PC or mobile devices. "INFO-Palette" design is surely going to enhance the office work style and activate the businesses.



9-inch touch panel

The operation screen features a large anti-static 9-inch multi-touch panel. Frequently used functions can be registered flexibly to enhance the office work performance. A built-in widget function enables to post a textbox, icon or GIF animation.



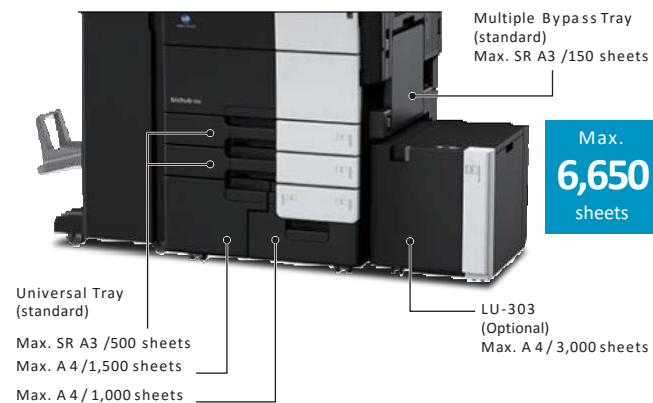
Top Menu Customisable to match applications
 Widget Function Enables transmission of messages using the Operation Panel
 Hard registration keys Register up to 4 commonly used function.

Allowing in-house production and faster document handling with multiple functions

Plenty of paper feed options

The standard paper capacity of the MFP is 3,650 sheets. The optional Large Capacity Unit will bring the maximum of 6,650*1 sheets to reduce overall MFP downtime caused by paper replenishment.

*1 When optional Large Capacity Unit LU-303 are mounted.



*The paper supply capacity for all models is based on 80g/m².

Large capacity and high-speed ADF

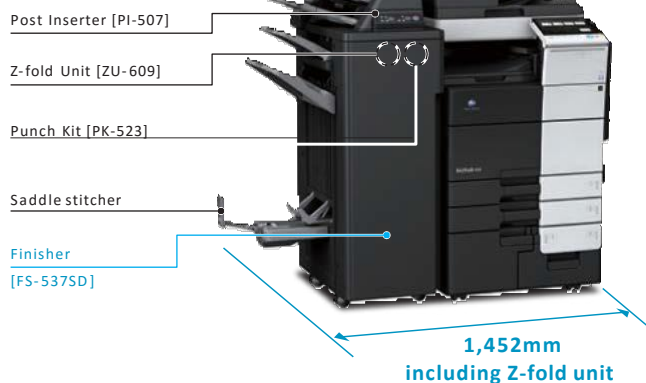
A single pass document feeder is mounted as standard, and it enables 240 opm*1 colour scanning. Up to 300 original documents can be loaded. As well as using an advanced technology to make higher scan quality, a large volume of scanning job can be processed speedily.

*1 At 300dpi, 2-sided

Finisher [FS-537/FS-537SD] *1

The compact and multi-function finisher [FS-537/FS-537SD] is newly developed, and a Z-fold unit [ZU-609] can fit into a finisher. FS-537/FS-537SD is capable of handling a wide range of post-processing include saddle-stitch, punch, staple, Z-fold and tri-fold to provide a high-quality finish.

*1 Optional



120opm for simplex documents
240opm for duplex documents



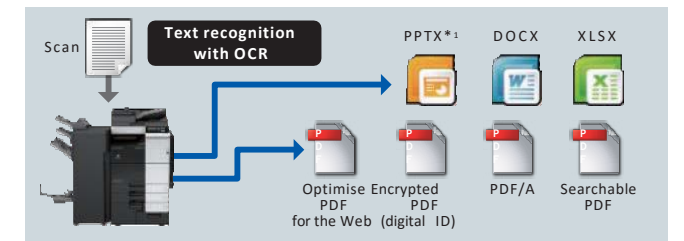
Document digitalisation

Paper documents can be scanned and converted into PDF and OOX M L (pptx, docx, xlsx) file formats. Choose a file format suitable for the work objective. To widen the potential of documents for secondary usage.

- OCR processing enables text searching.
- Images and text can be reused in applications such as Microsoft Office.

* Although pptx conversion is a standard function of this machine, optional i-Option LK-105 v4 or LK-110 v2 are required to use OCR.

Image of Scan to PDF and Scan to OOX ML (when LK-110 v2 is mounted)



Not just heavy use but flexible mobile connectivity

To connect with Android devices

The new Mobile Touch Area on the operation panel is ready to support NFC (Near Field Communication) connection with Android*1 devices. Touch the area with Android device to perform pairing through the Page Scope Mobile (PSM). Select files on the PSM, then touch the device to the operation panel to perform print*2 or touch the device to the operation panel to perform scan*2.



- *1 NFC connection requires Android OS 4.4 or higher to be installed.
- *2 Wireless LAN environment is required to perform touch to print and scan.

To connect with iOS devices

For the iOS device, to search and register MFP nearby into the Page Scope Mobile (PSM)*1 via Bluetooth LE (BLE)*2 technology. Additionally, iOS devices can be used to login to MFP through BLE connection. Select files on the PSM to print*3 directly from iOS devices or scan*3 files directly to the iOS devices.

- *1 Page Scope Mobile for iPhone/iPad version 5.0 or higher is required.
- *2 Optional Local Interface Kit EK-611 is required.
- *3 Wireless LAN environment is required to perform print and scan.

Wireless LAN (AP mode) support

The MFP becomes a wireless LAN Access Point*1 to allow direct wireless connection between mobile devices and bizhub. Devices brought into the office will be able to directly connect with bizhub and are securely separated from existing company LANs. Page Scope Mobile will enable more convenient use, as wireless set up can be completed between a mobile device and bizhub simply by reading the QR code that is displayed on the machine panel.

*1 Optional Upgrade Kit UK-212 is required.

Advanced security function indispensable when handling increased volumes of input and output

Authentication on the MFP main unit

Authentication can be performed directly on the main unit. Detailed access control can be set up for each function including copy, print, scan, and fax*1.

*1 Optional FAX Kit FK-516 is required.

IC card authentication

To authenticate*1 with various types of IC card*2. The authentication method is also compliant with SSFC (Shared Security Formats Cooperation) standard. Besides the IC card, authentication can also be performed with any Android devices*3 that equipped NFC antenna.

- *1 Optional Authentication Unit AU-2015 is required.
- *2 Compliant non-contact IC cards include FeliCa (IDm), SSFC, FCF, FCF (campus), FeliCa Private, and MIFARE (UID).
- *3 Requires Android 4.4 or later that supports HCE (Host Card Emulation) or PageScope Mobile for Android v4.1 or later.

Biometric authentication

The finger veins become the most accurate authentication tool. The biometric authentication is easy to implement but offering very high-level security.



* Optional Biometric Authentication Unit AU-102, Working Table WT-506 or WT-513 are required.

To connect instantly without print drivers to the industry standard mobile technologies

iOS

AirPrint

iOS and Mac OS X standard printing technology.

Android

Mopria Print Service
Multi-vendor-compatible application supplied by Mopria Alliance.

Konica Minolta Print Service
Application that enables mobile printing from bizhub.

Google Cloud Print

Enable printing via Cloud from Google Cloud Print supported application.

* Google Cloud Print Setup and Google account registration are required.

PageScope Mobile

Mobile application supplied by Konica Minolta that enable a wide range of bizhub functions including print, scan, staple and punch.

Windows 10 Mobile

HDD mirroring

Supports "Mirroring" which synchronises the main HDD data and the backup HDD data in real time. In the event of main HDD failure, operation automatically switches to the backup HDD which will drastically reduce the risk of data loss.

* Optional HDD Mirroring Kit HD-524 is required.

Server-less pull printing

Print jobs sent by user can be printed from any MFP in the office print group. To allow user to build a server-less pull printing system easier and with low introduction cost.

* A pull printing system consisting of a maximum of 10 MFPs can be created. It is necessary that all corresponding MFPs be in the same network.
 * Optional i-Option LK-114 are required to be installed to each of the MFP.

TPM (Trusted Platform Module)

Control the confidential information with a TPM (Trusted Platform Module) security chip which encrypts and decrypts any confidential data. The confidential information will be encrypted and stored only in the dedicated storage area in the chip. To avoid unauthorised reading from the outside.

* Optional i-Option LK-115 v2 is required.